

## 東京都選抜選手権大会 オイルパターン ボウリング競技



Oil Pattern Distance: <b>37 Feet</b>	Reverse Brush Drop: <b>37 Feet</b>	Oil Per Board: <b>50 uL</b>
Forward Oil Total: <b>23.55 mL</b>	Reverse Oil Total: <b>11.3 mL</b>	Volume Oil Total: <b>34.85 mL</b>
Forward Boards Crossed: <b>471 Boards</b>	Reverse Boards Crossed: <b>226 Boards</b>	Total Boards Crossed: <b>697 Boards</b>

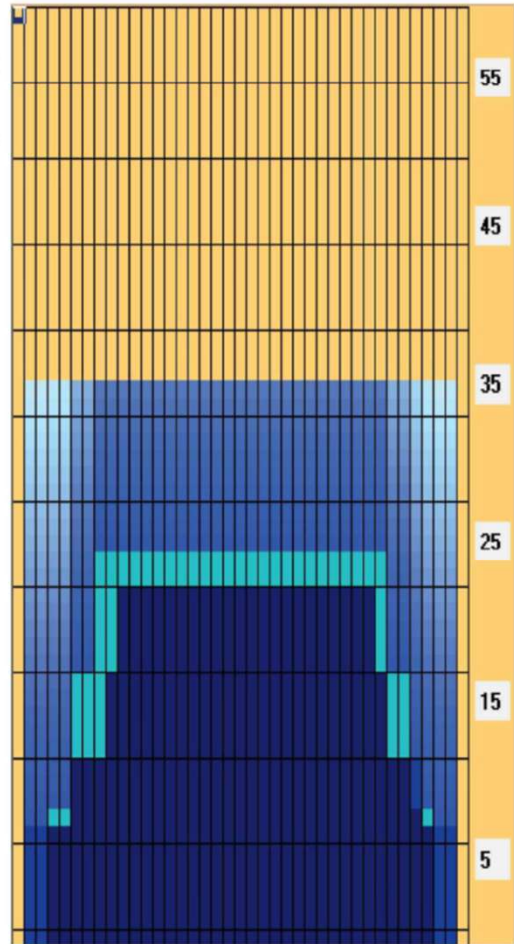
	Start	Stop	Loads	Speed	Crossed	Start	End	Feet	T.Oil
1	2L	2R	4	10	148	0.0	4.2	4.2	7400
2	4L	4R	4	14	132	4.2	12.1	7.9	6600
3	6L	6R	4	14	116	12.1	20.0	7.9	5800
4	8L	8R	3	18	75	20.0	27.6	7.6	3750
5	2L	2R	0	18	0	27.6	37.0	9.4	0

⏪ ⏩ ⏴ ⏵ Forward Reverse More

Conditioner:  
Type In or Select One

TransferType:  
Type In or Select One

- Forward
- Reverse
- Combined
- Buff



	Start	Stop	Loads	Speed	Crossed	Start	End	Feet	T.Oil
1	2L	2R	0	26	0	37.0	25.0	-12.0	0
2	10L	9R	2	18	44	25.0	19.9	-5.1	2200
3	9L	8R	2	18	48	19.9	14.8	-5.1	2400
4	6L	5R	2	14	60	14.8	10.9	-3.9	3000
5	2L	2R	2	14	74	10.9	7.0	-3.9	3700
6	2L	2R	0	10	0	7.0	0.0	-7.0	0

⏪ ⏩ ⏴ ⏵ Forward Reverse More

Item	3L-7L:18L-18R	8L-12L:18L-18R	13L-17L:18L-18R	18L-18R:17R-13R	18L-18R:12R-8R	18L-18R:7R-3R
Description	Outside Track:Middle	Middle Track:Middle	Inside Track:Middle	Middle: Inside Track	Middle:Middle Track	Middle:Outside Track
Track Zone Ratio	1.98	1.06	1	1	1.02	1.92

